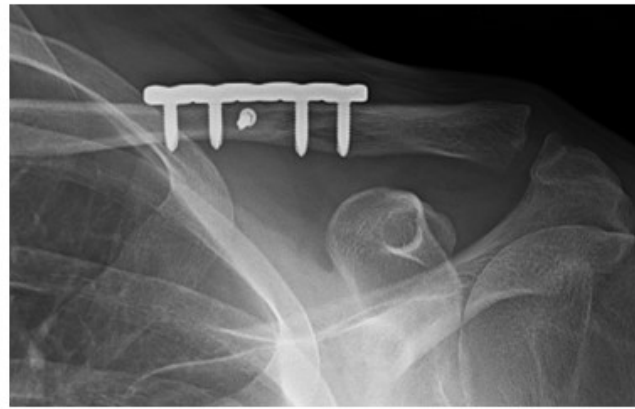


Clavicle (Collarbone) Repair with Short Straight Plating: Less Screws and Shorter Plate (Smaller Incision)

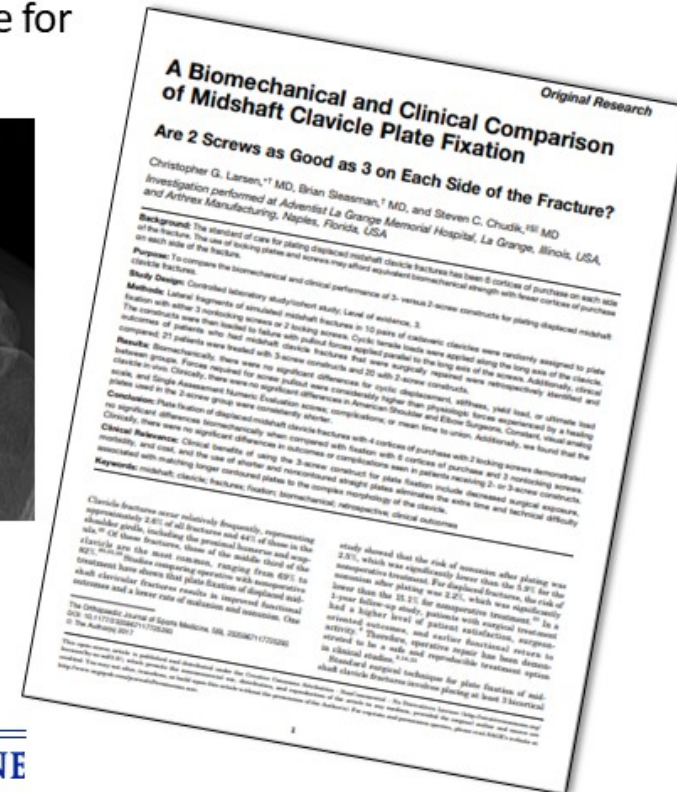
- Dr. Chudik developed and proved the clinical and biomechanical success of using straight shorter plates with less screws and a smaller surgical exposure for clavicle fractures.



Pre-op X-rays of midshaft clavicle fracture



Post-op X-rays with clavicle plate and screws



STEVEN CHUDIK MD
SHOULDER, KNEE & SPORTS MEDICINE